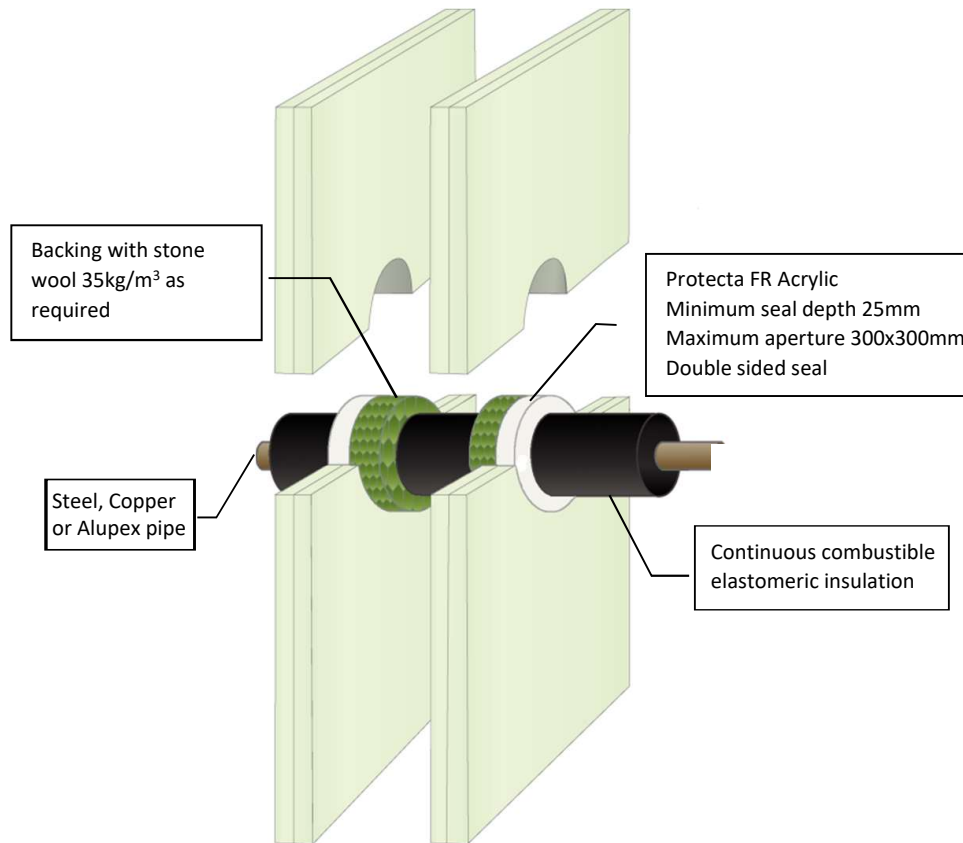


Protecta FR Acrylic - Plasterboard Wall Metal Pipe - Steel, Copper, Alupex Insulation - Continuous Combustible (Elastomeric) or Non-combustible

Installation Instructions

1. Before installing Protecta® FR Acrylic ensure that the surface of all service penetrations and surrounding construction is free from all loose contaminants, dust and grease.
2. Where Protecta® FR Acrylic is to be installed against surfaces that cannot tolerate direct contact; appropriate surface preparation should be made (contact Polyseam for guidance in these cases). For paints sensitive to sealing compounds, priming with a PVA primer is recommended.
3. When installing the sealant in gypsum boards, the exposed edges of the board can be wetted with water, or Protecta® FR Acrylic diluted with water to prime the surfaces helping adhesion and preventing excessive joint shrinkage.
4. When installing any backing material, cut this slightly oversize and insert into the gap ensuring a tight friction fit. Ensure correct depth is achieved.
5. Fill the gap or joint with Protecta® FR Acrylic to the required depth.
6. Apply the sealant generously to prevent air bubbles. Finish the bead with a moist spatula, pallet knife or brush.
7. Protecta® FR Acrylic can be over-painted with most emulsion or alkyd (gloss) paints.



NOTE: Results for combustible insulation may be applied to equivalent non-combustible insulation (Warringtonfire FAS190390 Pg 6)

System/FPA Register ID# FC365

Products	Protecta FR Acrylic
Application	Fire stopping of metal pipes with combustible insulation in flexible walls
Construction	Minimum wall thickness of 100mm comprising steel or timber studs lined on both faces with minimum 2 layers of 12.5mm thick boards.

Fire & Sound classification

Steel pipes up to 40mm diam with 13-19mm thick insulation, no backing	FRR -/120/120
Steel pipes up to 165mm diam with 13-25mm thick insulation, no backing	FRR -/60/60
Steel pipes up to 273mm diam with 26-100mm thick phenolic insulation, no backing	FRR -/60/60
Steel pipes up to 165mm diam with 13-19mm thick insulation and 25mm stone wool backing	FRR -/120/60
Copper or steel pipes up to 54mm diam with 9-13mm thick insulation	FRR -/120/60
Copper or steel pipes up to 54mm diam with 13-25mm thick insulation	FRR -/60/60
Alupex pipes up to 75mm diam with 25mm thick insulation	FRR -/90/90
Alupex pipes up to 75mm diam with 9-25mm thick insulation	FRR -/60/60

ZERO Smoke leakage up to 200Pa

Sound reduction (seal only) STC 62

Sheet size: **A4**
Drawn date & no: 24/5/21